



MODEL M - MAGNETIC DRIVE

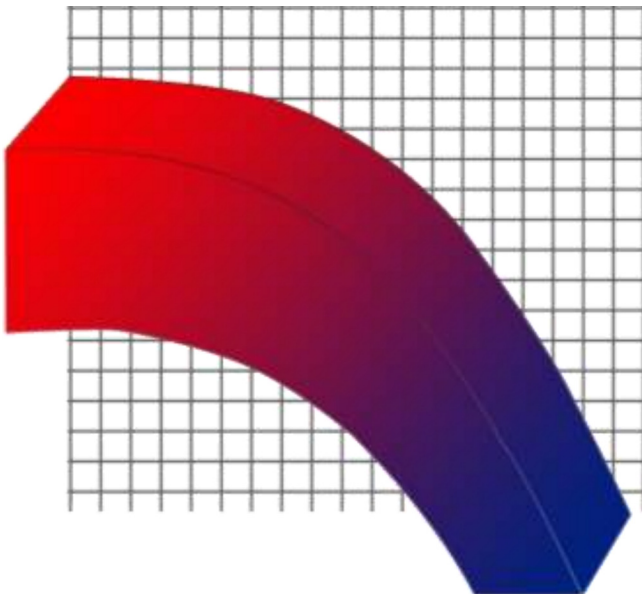






MAGFLOW SEAL-LESS MAG-DRIVE PUMPS

MAGFLOW centrifugal magnetic-drive pumps have been engineered for efficient, reliable, zero leakage pumping in a wide range of chemical processes and OEM system applications. MAGFLOW pumps may look similar to competitive designs but the features and performance capabilities of MAGFLOW far exceed other manufacturers. The compact design of MAGFLOW allows for retrofitting many existing systems without costly re-piping modifications.



WIDER PERFORMANCE RANGE

Larger diameter shafts, and heavy duty internal bearings allow MAGFLOW pumps to operate across the entire performance curve in a continuous service mode. MAGFLOW pumps are particularly suited for trouble-free operation in filtration, spray systems and other high head applications.



Standard NEMA Motors

MAGFLOW pumps are fitted with standard NEMA frame 56-C, 143-TC or 182-TC motors for minimizing replacement costs. A wide range of specifications can be met, including high efficiency, TEFC, UL, Explosion Proof, and Mill & Chemical Duty.



MODULAR IMPELLERS MATCH HYDRAULIC REQUIREMENTS

An interchangeable impeller design, independent of the internal magnet, is standard on all MAGFLOW pumps. Standard impeller sizes are available from stock for matching performance requirements. Five standard sizes accommodate 1.0 through 1.8 specific gravity liquids, preventing the overloading of magnetic couplings and motors.



Competition



MAGFLOW

MAGFLOW Performance

All MAGFLOW pumps employ a volute casing design for optimal efficiencies and higher head capacities. Oversized internal components are built to withstand maximum axial and radial shaft loads. Heavy casing wall thickness adds strength, chemical resistance and temperature capability.



Advanced Magnet Technology

Segmented magnets provide high torque with low mass to resist uncoupling and reduce bearing wear. Dual rare earth magnets provide reliable performance, even in high specific gravity services.

"M" Series seal-less mag-drive thermoplastic centrifugal pumps provide high reliability, with emphasis on optimum chemical compatibility. Interchangeable impellers provide flexibility for precisely matching head and flow capacities. MAGFLOW can be used in a wide range of acids and alkaline solutions up to temperatures of 180° F.



Standard Features Include:

- ▶ Oversized internal shaft, sleeve and thrust bearings
- ▶ Interchangeable impellers, independent of internal magnets
- ▶ Standard NEMA frame motors
- ▶ Volute casing for optimum efficiencies and performances
- ▶ Heavy walled casings for added strength, pressure and temperature resistance
- ▶ High torque, low mass magnetic couplings resist uncoupling
- ▶ 5 models available with flows to 175 GPM
- ▶ Constructed in Polypropylene (PP), or Polyvinylidene Fluoride (PVDF)



Typical Applications:

- ▶ Electroplating, Printing Circuit Board & Electronics Manufacturing
- ▶ Semiconductor/ Ultra-pure
- ▶ Water Conditioning & Waste Treatment
- ▶ Photo Imaging & Photo Processing
- ▶ Chemical Processing & Distribution
- ▶ Pulp & Paper Processing
- ▶ Pharmaceutical
- ▶ Textile
- ▶ OEM Systems



The **MAGFLOW 4 M** has the most rugged design of its class. It is especially designed to withstand higher loads associated with higher capacities. This pump is a cost effective solution for zero emissions and high flow systems.

Technical Data

Flow: 2-175 GPM (.45-40 M³/H)

Head: To 110 FT (33 M)

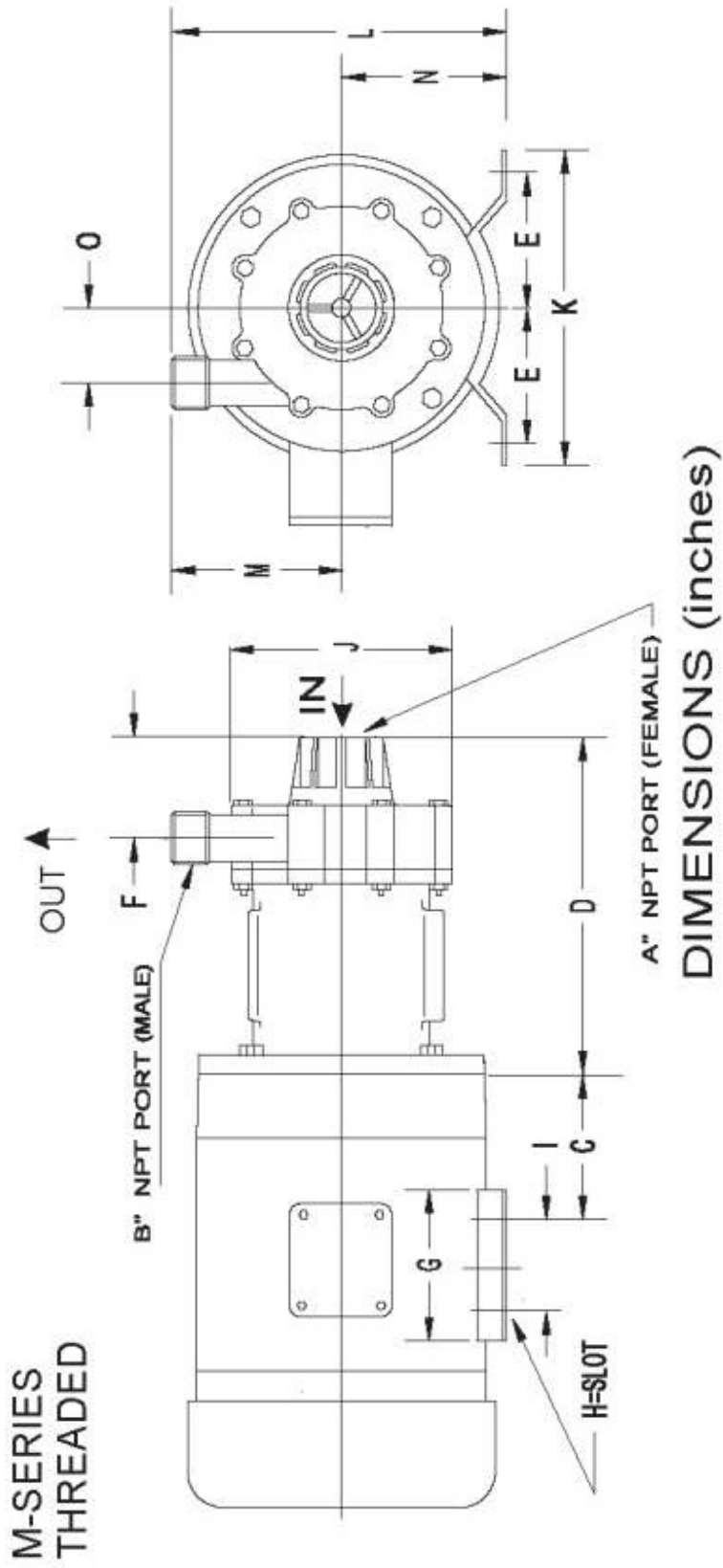
Temp: To 180°F (85°C)

MATERIALS OF CONSTRUCTION

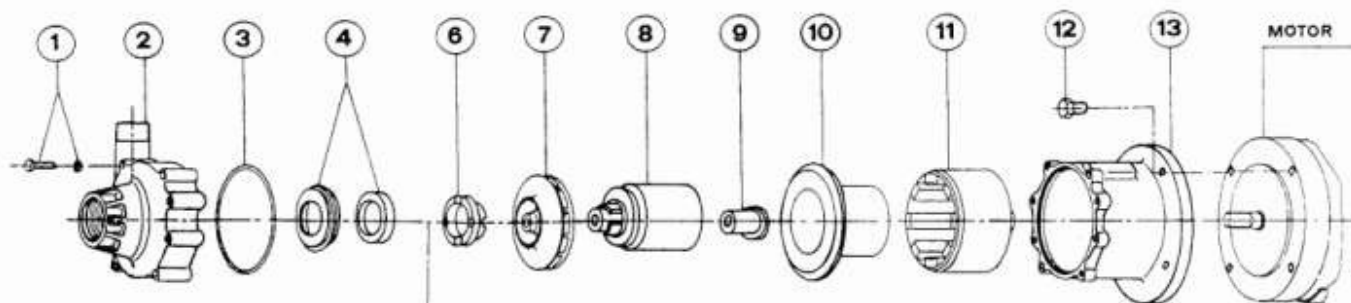
PP	Polypropylene w/ glass fiber
PVDF	Polyvinylidene fluoride w/ carbon fiber
Ceramic	99.7% Alumina free oxide
PTFE-C	PTFE with 20% carbon

MODEL*	MAX. GPM	MAX. HEAD (FEET)	SUCTION PORT	DISCHARGE PORT	WETTED MATERIALS	MAX. PSI CASING	MAX. TEMP	HP	MAX HP	APPROX. WT. W/O MOTOR	NEMA FRAME
0M.5x1-3PP	18	36	1" FPT	1/2" MPT	PP, Ceramic, PTFE-C, EPDM	90	140	1/6	1/6	6 lbs.	n/a
0M.5x1-3PV	18	36	1" FPT	1/2" MPT	PVDF, Ceramic, PTFE-C, Viton	90	180	1/6	1/6	6 lbs.	
1M.75x1-3PP	34	43	1" FPT	3/4" MPT	PP, Ceramic, PTFE-C, EPDM	90	140	1/2	1	7 lbs.	56 C
1M.75x1-3PV	34	43	1" FPT	3/4" MPT	PVDF, Ceramic, PTFE-C, Viton	90	180	1/2	1	8 lbs.	
2M1x1.5-4 PP	65	58	1-1/2" FPT	1" MPT	PP, Ceramic, PTFE-C, EPDM	90	140	1	2	9 lbs.	56 C
2M1x1.5-4 PV	65	58	1-1/2" FPT	1" MPT	PVDF, Ceramic, PTFE-C, Viton	90	180	1	2	10 lbs.	
3M1.25x2-5 PP	125	95	2" FPT	1-1/4" MPT	PP, Ceramic, PTFE-C, EPDM	90	140	3	3	16 lbs.	56 C or 143/5 TC
3M1.25x2-5 PV	125	95	2" FPT	1-1/4" MPT	PVDF, Ceramic, PTFE-C, Viton	90	180	3	3	17 lbs.	
4M1.5x2-5 PP	185	115	2" FPT	1-1/2" MPT	PP, Ceramic, PTFE-C, EPDM	90	140	5	7.5	23 lbs.	143/5 TC or 182/4 TC
4M1.5x2-5 PV	185	115	2" FPT	1-1/2" MPT	PVDF, Ceramic, PTFE-C, Viton	90	180	5	7.5	24 lbs.	

* All performances rated at 3500 RPM



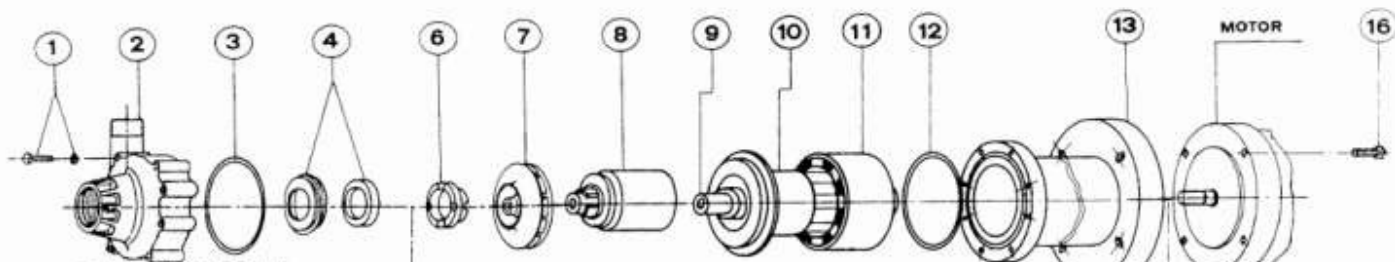
Dimensions (inches)																
PUMP MODEL	NEMA FRAME	A	B	C	D	E	F	G	H	I	J	K	L	M	N	O
.5x1-3	N/A	1	1/2	1-3/8	4-1/2	1-3/4	1-1/2	3-1/2	11/32	2-13/26	4-1/2	4	5-5/16	3-1/8	2-3/16	1-5/16
.75x1-3	56C	1	3/4	2-9/16	6-3/4	2-7/16	2-3/8	4-1/2	11/32	3	5-5/8	6-1/2	7-1/8	3-5/8	3-1/2	1-13/16
.75x1-3	56C	1	3/4	2-9/16	6-3/4	2-7/16	2-5/16	4-1/2	11/32	3	5-5/8	6-1/2	7-1/8	3-5/8	3-1/2	1-13/16
1x1.5-4	56C	1-1/2	1	2-9/16	8	2-7/16	2-3/4	4-1/2	11/32	3	6-1/8	6-1/2	7-7/16	3-15/16	3-1/2	1-3/4
1.25x2-5	56C	2	1-1/4	2-9/16	9-3/4	2-7/16	3-1/4	4-1/2	11/32	3	7-7/8	6-1/2	8-7/16	4-15/16	3-1/2	2-1/2
	2-13/16			2-3/4		6		11/32	5							
1.5x2-5	143/5 TC	2	1-1/2	2-13/16	11	2-3/4	3-5/8	6	11/32	5	7-1/2	6-1/2	7-3/4	4-1/4	3-1/2	2-1/2
	182/4 TC															



1. BOLT WASHER & NUT
2. PUMP HEAD
3. O-RING
4. THRUST BEARING & SLEEVE
5. SHAFT & RING
6. IMPELLER THRUST BEARING
7. IMPELLER
8. INTERNAL MAGNET
9. BEARING
10. REAR CASING
11. EXTERNAL MAGNET
12. SCREW (4PCS)
13. BRACKET

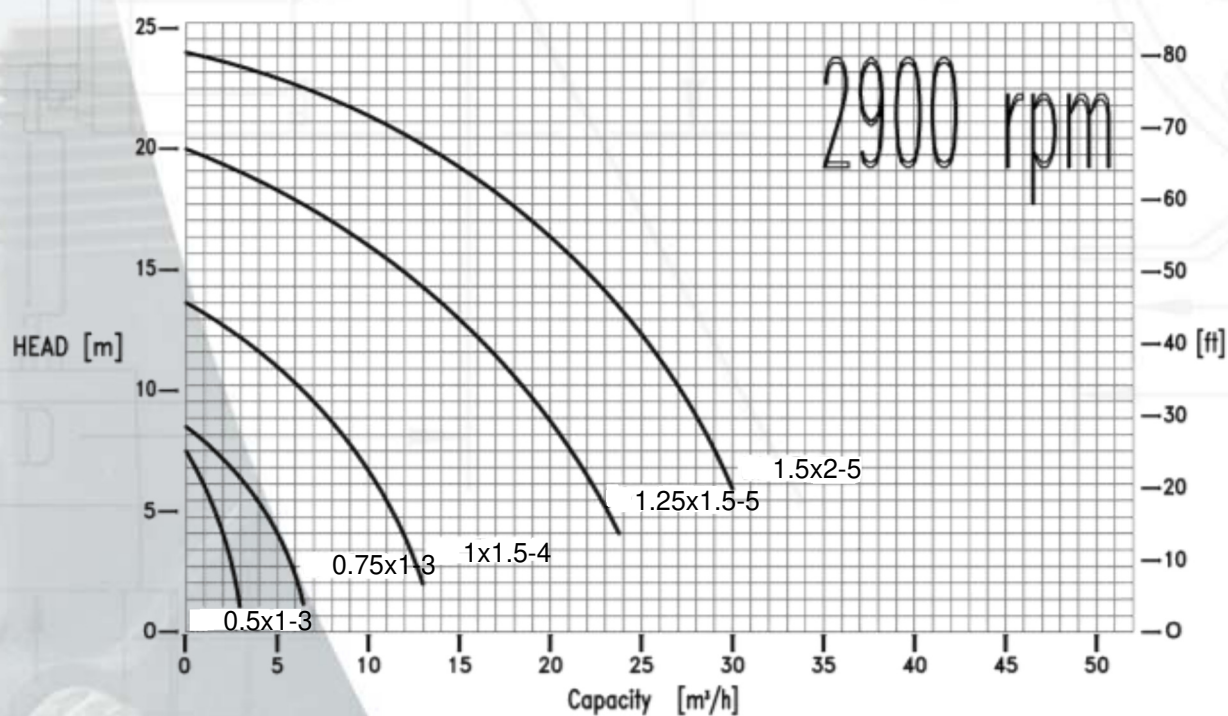
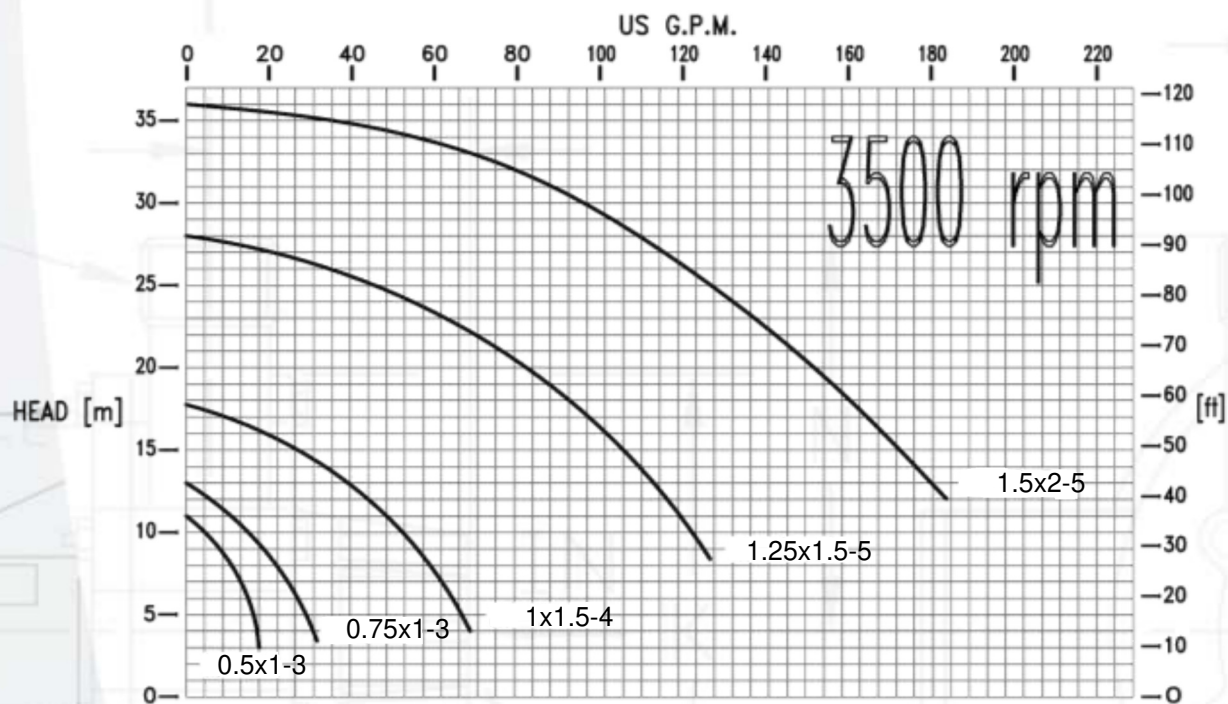
"M" SERIES

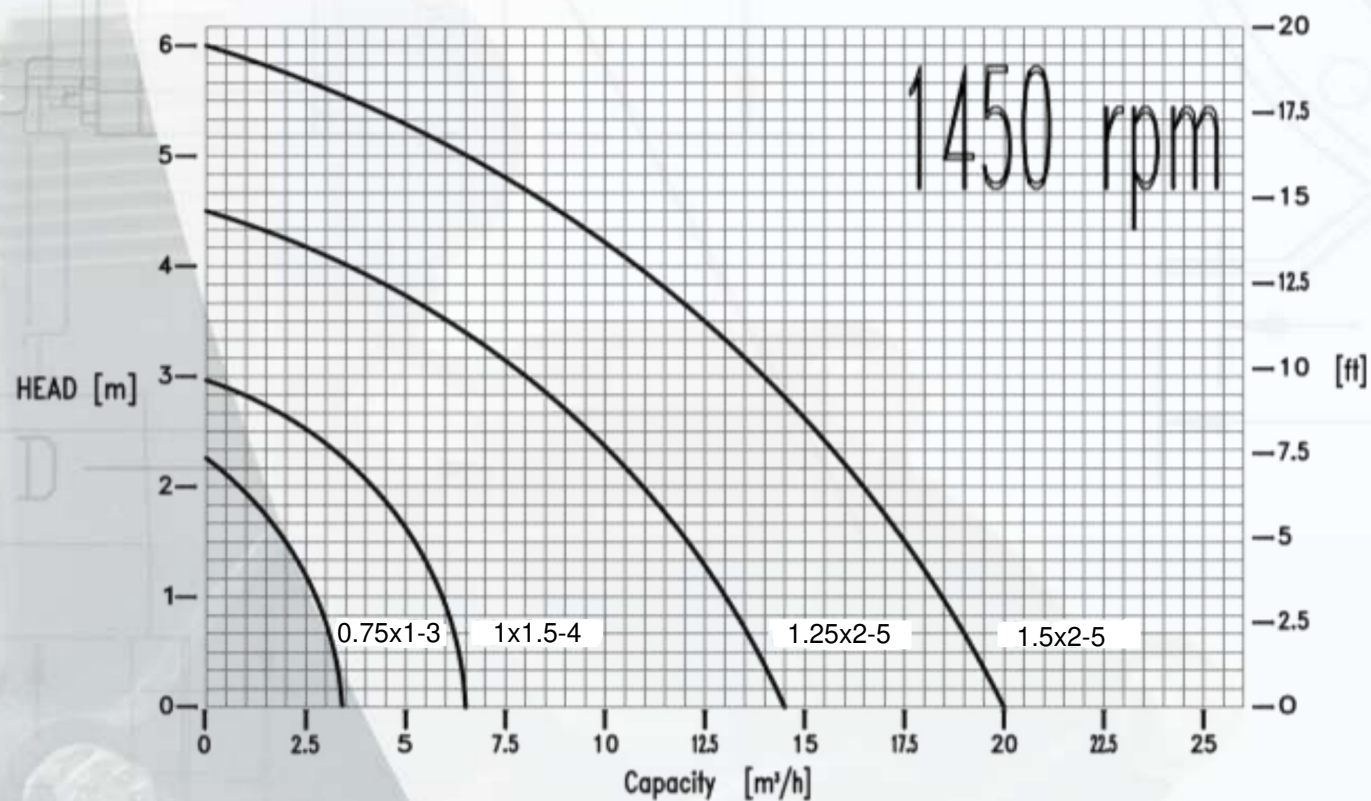
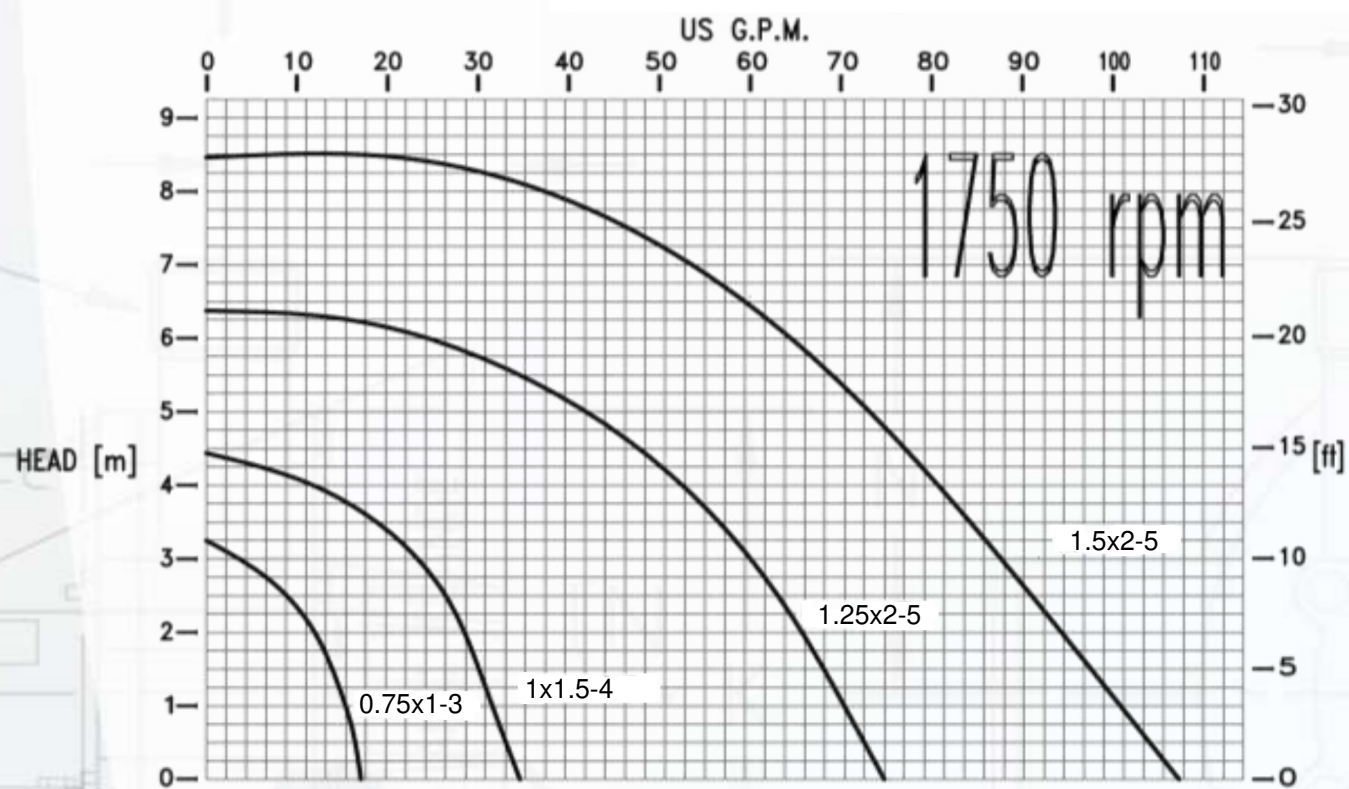
Note: Please consult factory for a parts breakdown for M4.0N and M8.5H



1. BOLT, WASHER & NUT
2. PUMP HEAD
3. O-RING
4. THRUST BEARING & SLEEVE
5. SHAFT & RING
6. IMPELLER THRUST BEARING
7. IMPELLER
8. INTERNAL MAGNET
9. BEARING
10. REAR CASING
11. EXTERNAL MAGNET
12. O-RING
13. BRACKET
14. BOLT & LOCK WASHER
15. MOTOR SHAFT EXTENSION
16. SCREW

"MV" SERIES





AUTHORIZED DISTRIBUTOR

